

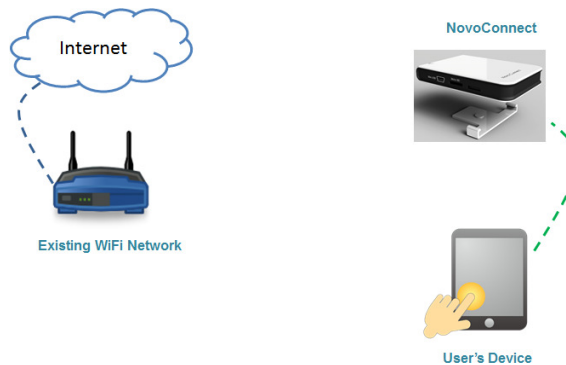
WiFi Configuration

I. WiFi Modes

NovoConnect supports two WiFi modes

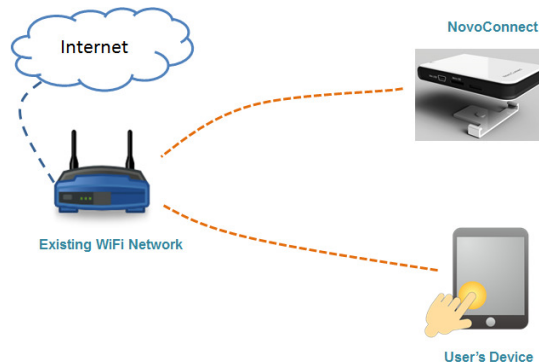
(1) Hotspot Mode

- The NovoConnect device acts as a “wireless router”
- Users connects their devices to this “wireless router”
- Users do not have access to the Internet



(2) Client Mode

- The NovoConnect device connects to an existing wireless network (like a school or a company's WiFi network)
- Users connects their devices to the same wireless network
- Users have access to the Internet via this existing wireless network.



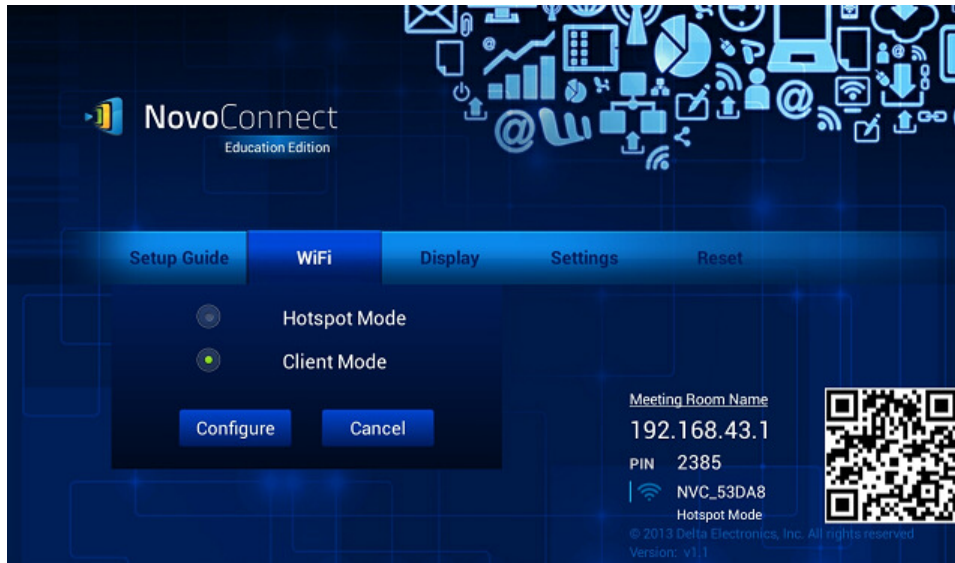
There are two ways to configure the WiFi settings

1. On-screen configuration
2. Configuration via PC/Mac software (Desktop Streamer)

The following two sections describe these two approaches in details.

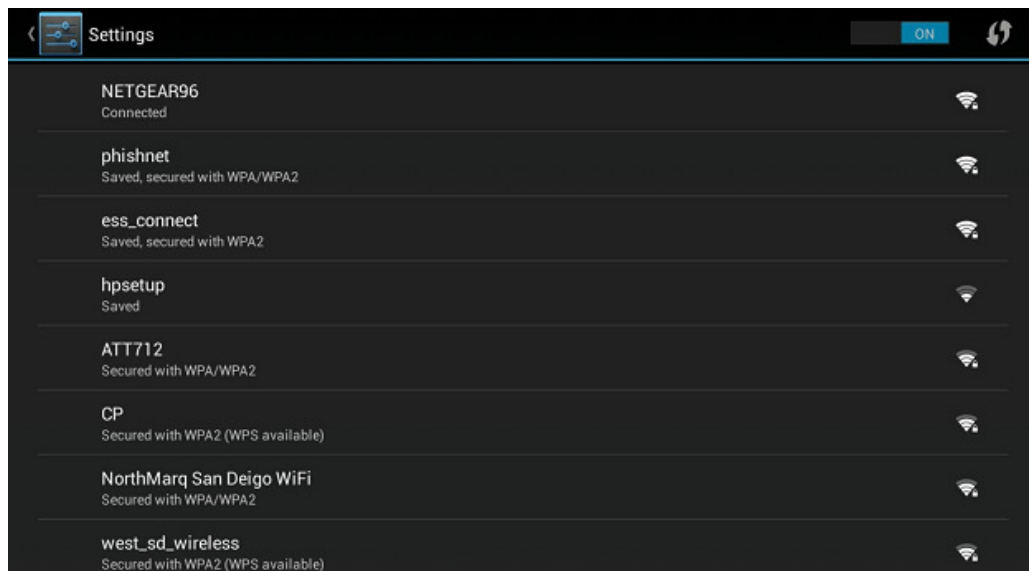
II. On-Screen Configuration

- Step 1. Connect a mouse to the NovoConnect device.
- Step 2. After it boots up, use the mouse to click button “WiFi”, shown below.



- Step 3. To connect the NovoConnect device to an existing wireless network, select “Client Mode” and then click button “Configure”. It will bring up the following WiFi configuration screen.

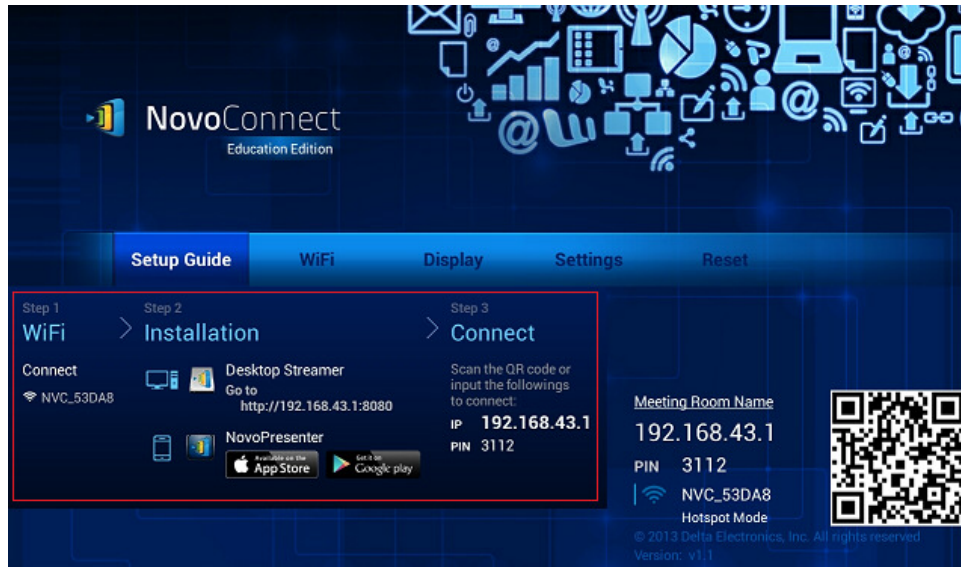
Select the desired WiFi network and enter the proper security key (if prompted). The wireless connection should be established in 5~20 seconds.



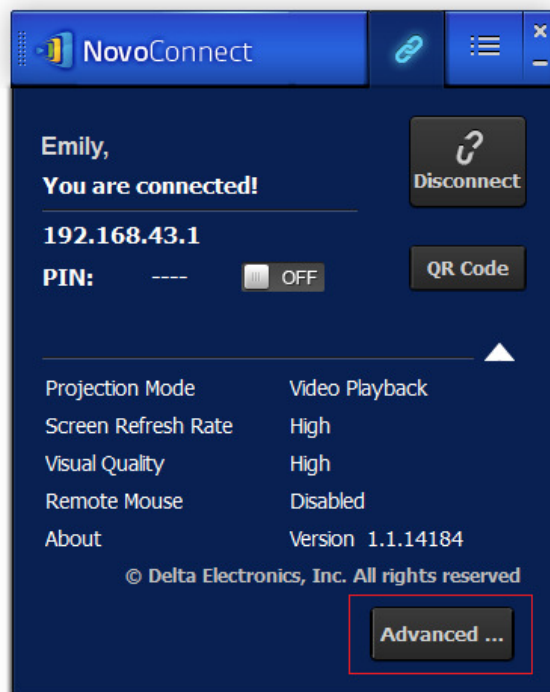
- Step 4. Then, click the “Go-Back” button, , to return to the home screen for normal operation.

III. Configuration via PC/Mac Software

- Step 1. Follow the on-screen instructions to download and install PC/Mac software “Desktop Streamer,” as highlighted in the following figure. (You can skip this step if you have already done so.)



- Step 2. Click button “Advanced...” (highlighted in the following figure) to access its advanced settings menu.



Step 3. In section “WiFi Network” (highlighted in the following figure), input the information as appropriate and then click “Apply.” The NovoConnect device immediately tries to connect to the WiFi network you specify.

If it fails, it will go back to the default WiFi Hotspot mode where you can re-start this configuration process.

