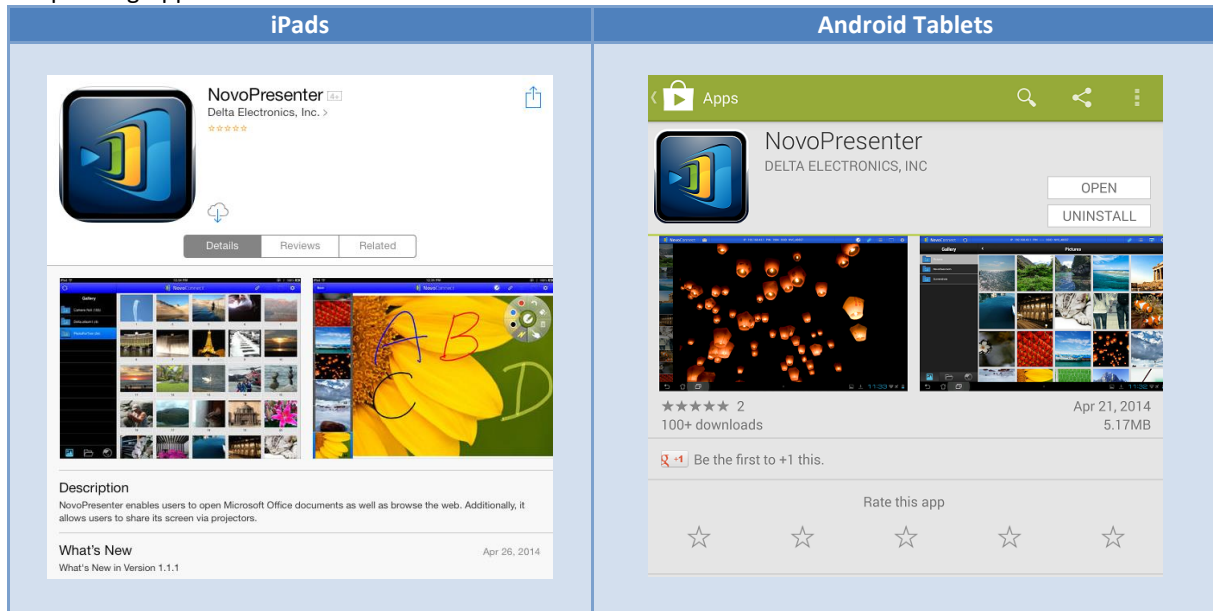


## Software Installation

This document describes software installation for Windows, Mac, Android, iOS, Chromebook and Linux.

### I. Tablets/Phones: NovoPresenter

The App for mobile devices (iOS and Android) is called “**NovoPresenter.**” You will be able to install it through the corresponding App store.



### II. PC/Mac: Desktop Streamer

The software for PC and Mac is called “NovoConnect **Desktop Streamer.**” There are two ways to obtain the installation package.

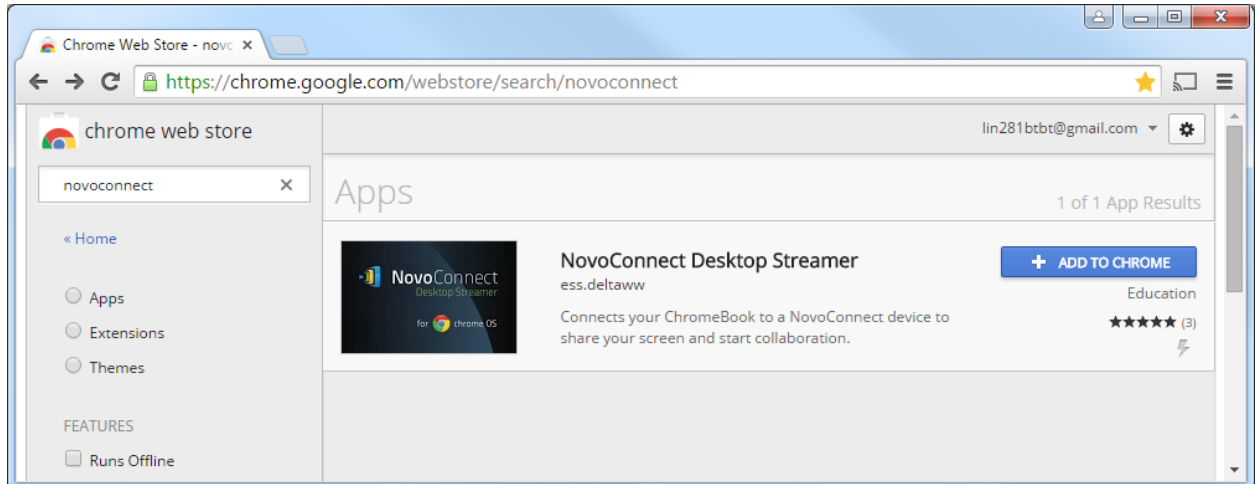
- (1) Download it from Vivitek’s website  
<http://www.vivitekusa.com/novoconnect/>
- (2) Download it directly from the NovoConnect device. The steps involved are described on NovoConnect’s projection screen, as shown below.



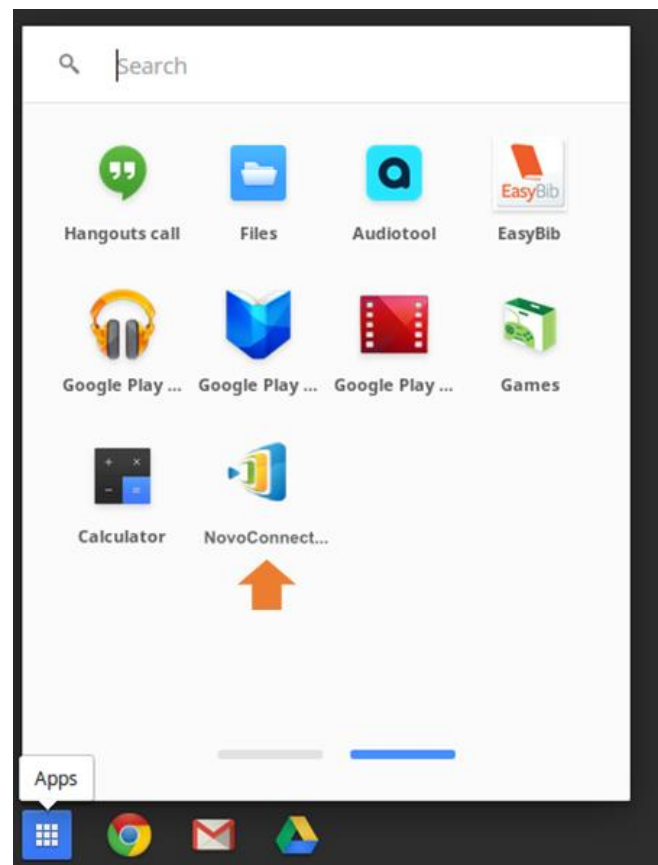
Once it is downloaded, you can start installing the software by launching the software package.

### III. Chromebooks: Desktop Streamer

- (1) Open the following link with the built-in Chrome browser  
<https://chrome.google.com/webstore/search/novoconnect>



- (2) Click the blue button “+ Add to Chrome” to start the installation process. Follow the on-screen instructions and you should be able to install it in a few seconds.
- (3) After a successful installation, you will be able to locate the App in its application folder.



## IV. Linux: Desktop Streamer

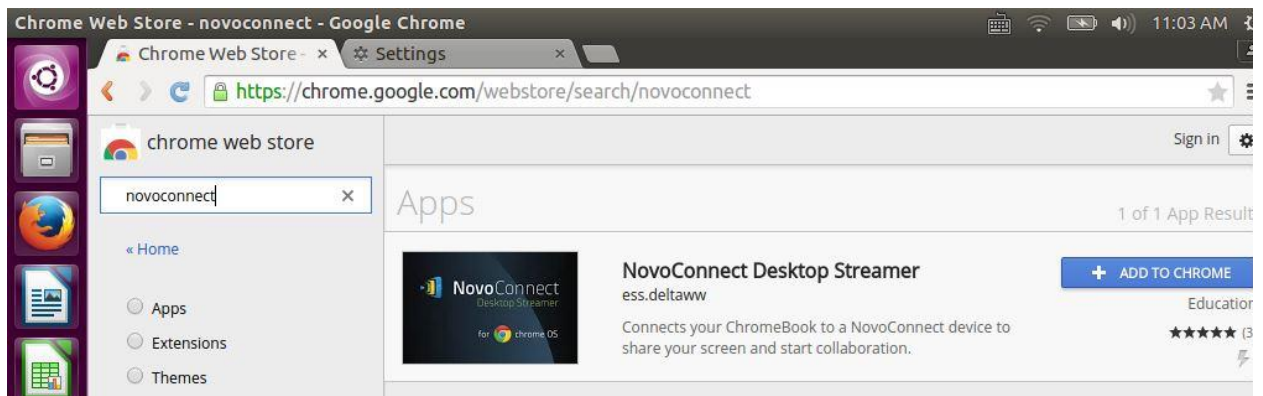
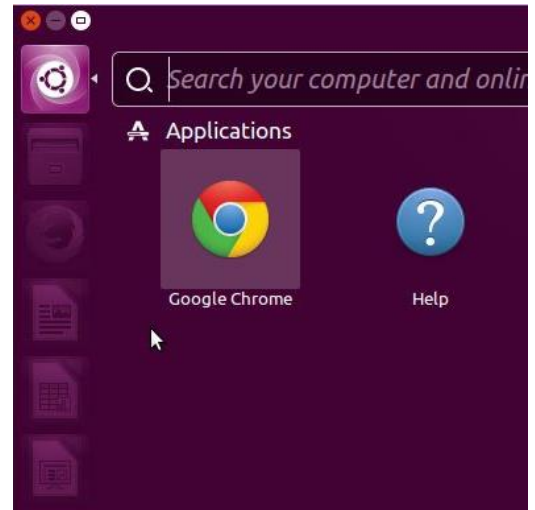
To run Desktop Streamer on Linux computers, you will need Google Chrome browser (see the figure to the right.) If you don't find "Google Chrome" in your application folder, please visit Google's website for download and installation.

If you already have the Google Chrome browser, make sure its version is 37 or above.

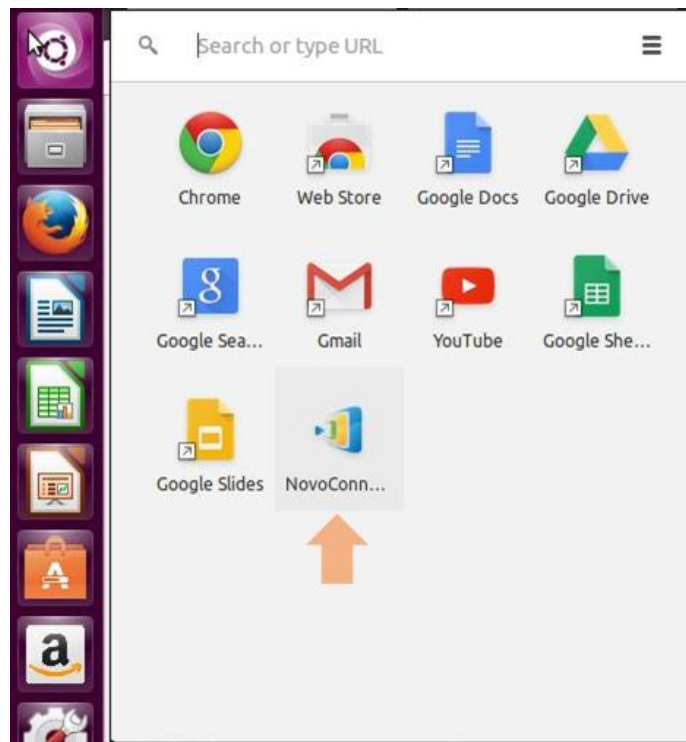
Once you have the proper Google Chrome browser, you can follow these steps to install and run NovoConnect Desktop Streamer on Linux computers.

- 1) Launch Google Chrome browser and go to web-link <https://chrome.google.com/webstore/search/novoconnect>

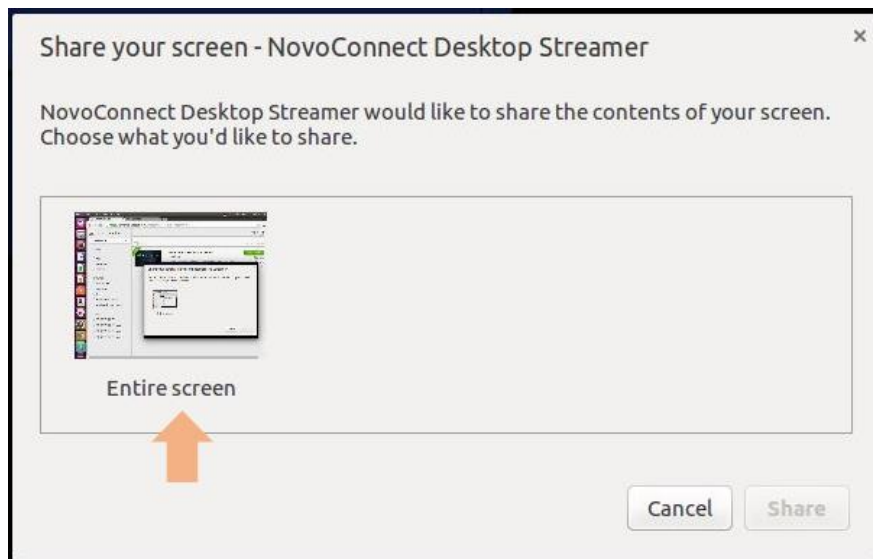
Click the blue button "+ Add to Chrome" to start the installation process. Follow the on-screen instructions and you should be able to install it in a few seconds.



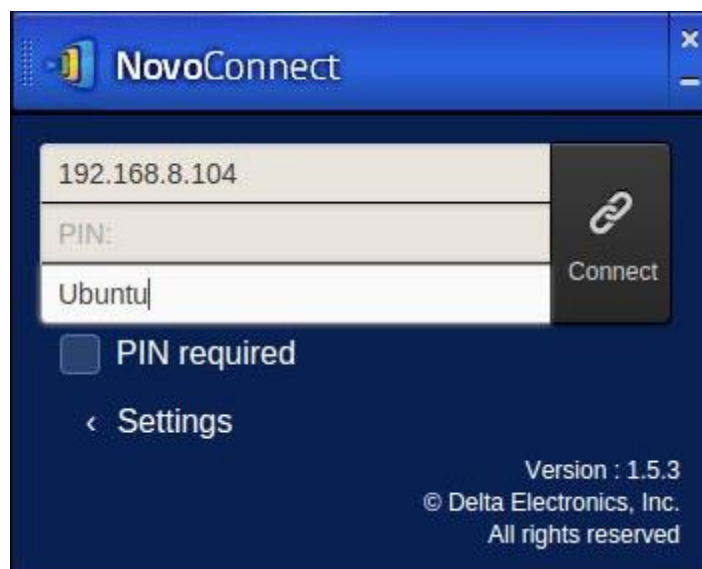
- 2) After the installation, you will be able to find the NovoConnect Desktop Streamer software via “Chrome App Launcher” or Ubuntu’s built-in search.



- 3) To run the software, click on “NovoConnect Desktop Streamer.” You will be prompted for the following dialog. Double-click on “Entire Screen” to launch the software.



- 4) Then, you will be able to see the normal log-in screen, as shown below. Now you can start to use the software the same way as you would on PC/Mac.



Note:

- 1) This version of software is designed to work with NovoConnect Education Edition.